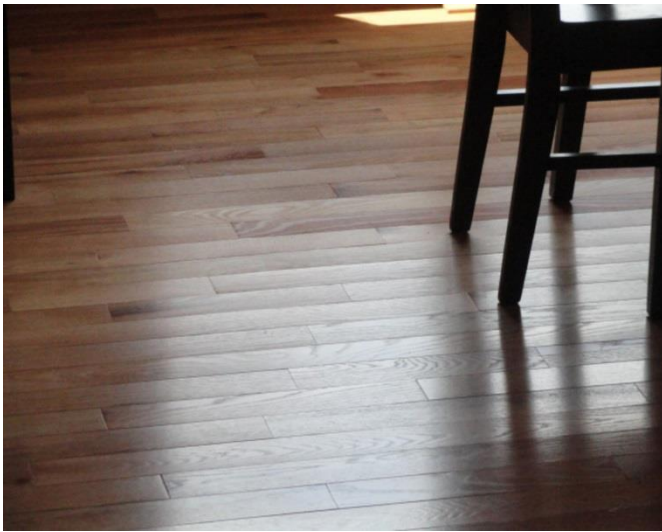


M YTH BUSTING MONDAY

#MB102

MYTH: Hardwood floors cup as a result of manufacturing defects.



Examples of Cupped Flooring

FACT: Cupping results from a moisture differential between the face and back of individual pieces of flooring, usually excess moisture on the underside of the floor. Flooring also may cup when it experiences rapid drying on the surface, often during the heating season. More subtle cupping can be caused by lack of proper acclimation prior to installation (this is generally permanent cupping). To remedy cupping, identify and remove sources of excess moisture. For floors that have cupped due to drying, relative humidity should be increased. If boards are permanently cupped, the cupped edges may be sanded off.